

MADE IN **LEICESTERSHIRE**



CREATIVE LEICESTERSHIRE
RUTH SINGER
2019



PHOTO CREDITS

All portrait and event photos
by Rosie Reed Gold 2019

www.rosiereedgold.com

Other images courtesy of the artists

INTRODUCTION

Leicestershire & Rutland is home to artists and makers who exhibit, sell and thrive in an international market, who show in the UK's top galleries, who win significant prizes and who are taking Leicestershire's finest art and craft talent out into the world.



Despite these successes Leicestershire could be better known as a place that encourages creative excellence and celebrates artistic talent. Therefore to develop the Made in Leicestershire market, Creative Leicestershire worked with artist Ruth Singer to consult its network through online surveys and focus groups. Until recently the Made in Leicestershire brand existed as a website and printed directory of Leicester, Leicestershire and Rutland artists, makers and galleries and it was run by Creative Leicestershire as part of a portfolio of business support activities for creative industries. This previous directory was created with the aim of attracting buyers and commissioners but was limited in its capabilities and used mainly by those looking for artists to run events and for craft fairs. For this research, Ruth started with the question *Who is Made in Leicestershire For?* And she has approached this project focussing on what artists need to make a living and how agencies might support this.

MADE IN LEICESTERSHIRE

2018-2019 RESEARCH AND DEVELOPMENT

One of the key findings of this market development was the requirement for more showcasing and promotional activity. Therefore, the primary purpose of this publication is to showcase some of the excellent creative and artistic talent in the county. Following on from this work, the next stage will be to establish a peer to peer network for artists to gain professional development, peer to peer support, increased skills in running business, as well as further showcasing and promotional activities.

This research has been co-ordinated by artist and consultant Ruth Singer since early 2018. It has been funded by the Collaborate for Growth project, part funded by European Regional Development Funds (ERDF) providing support to small and medium sized businesses in Leicester and Leicestershire that want to grow. The development of a Made in Leicestershire network has been match funded with a Arts Council National Lottery Project Grant.

Ruth is a Leicester-based artist with a long-standing interest in supporting artist practice locally and has worked with Creative Leicestershire for several years, providing training and research. Ruth also works as a mentor to creative businesses and runs professional development training.



WHO IS MADE IN LEICESTERSHIRE FOR?

The research findings showed that individual artists and organisations have different needs and interests:

Organisations are interested in a resource directory to find local artists for whom they may deliver services or commission activity such as running workshops. For them, locality is very important, and also the type of work the artists can deliver (e.g. services such as workshops or schools activity) is more important than what the artists make, sell and why they do it.

Artists are interested in having a promotional brand to highlight and celebrate the best talent in the county ideally promoting their work to individual buyers, commissioning agencies or support agencies. For them the network should have artist needs and development at its core.



LEICESTERSHIRE & RUTLAND ARTIST COMMUNITIES

A survey was run in 2017 exploring the current working practice and development needs of the county's creative makers and visual artists. This, combined with further research in 2018-19 has created a snapshot of life as an artist in this area.

The number of professional working artists and makers is hard to count.

- Leicester Society of Artists has around 140 members.
- Over 100 people filled in each of our surveys.
- Rutland Open Studios 2019 has 50 individuals listed.
- Creative Leicestershire's opportunities bulletin has nearly 1000 subscribers.
- The 2008-9 Directory included about 200 individual artists.

We estimate that there are probably 250 active artists and makers who generate the majority or all of their income from their practice. There are hundreds more who practice art regularly and sell some work but it is not their sole income, including many selling on a small scale online and in local shops alongside other work or life commitments. There are many others working in heritage crafts, traditional art and fine art who have not been within the remit of Made in Leicestershire and / or choose not to engage with services or are not aware of them, so haven't come to our attention. For many artists, the main way they make income is through teaching and in many cases this is the majority of their creative practice, without any major exhibition or retail activity. It is very hard to define professional practice in this context.

THE IMPORTANCE OF THE COUNTY & LOCAL AGENDA

The local agenda is particularly relevant and important to local organisations, independent shops and galleries. It is less relevant to artists and makers, though this varies hugely depending on whether they exhibit and sell locally or nationally and internationally. The 2019 survey shows an average of 5.2 (on scale of 1-10) of the importance of Leicestershire / Rutland to their own presentation and selling of work.

There is also a strong interest in producing work with Leicestershire / Rutland theme / inspiration for promotional purposes, with 38 artists / makers expressing their interest in this.



HOW DO LEICESTERSHIRE AND RUTLAND ARTISTS AND MAKERS MAKE A LIVING?

- 60% take part in local craft and art fairs
- 55% show their work in Leicestershire and Rutland exhibitions
- 44% regularly sell in local shops / galleries
- 27% take part in local open studios and trails
- 48% run workshops in Leicestershire or Rutland

(Figures given refer to the percentage of respondents to the 2019 survey)

These figures show that a significant proportion of respondents are not taking part in local activity, either through lack of suitable opportunities or lack of access.

The exhibitors in the 2018 Made in Leicestershire showcase at LCB Depot called TACIT (see page 19) give a slightly different perspective. These artists were selected for the type of work they create and with the knowledge that they rarely show work in the county as most of their activity takes place nationally or internationally. Three quarters of the exhibitors felt that there were no suitable exhibition venues in the county for their work and most did not feel connected to the local artist community.

ARTISTS AT WORK

Our surveys show a very varied picture of part, full-time and freelance work. Nearly 50% state that they undertake freelance work, 60% don't have another job outside of their practice but the rest work full or part time at another job. 76% of respondents were sole traders and 75% had been in business for over 2 years with 26% having been in business 13 years or longer.

Online shops, exhibitions and galleries are the most significant sales channels. 23% of respondents sell internationally and 15% in Europe.

TEACHING

Freelance or employed teaching is a significant income stream for many creatives. In both surveys around 50% were involved in teaching with the majority being in creative subjects. This mostly takes place locally and there is a high proportion of teaching which is self-organised and with adults (81%).



LEICESTER, LEICESTERSHIRE AND RUTLAND'S VIBRANT ARTIST AND CREATIVE COMMUNITY ACTIVITY

- StudionAme artists have had group stands at major London art fairs
- ArtSpace Loughborough have created *Into The Outwoods* Sculpture Trail
- Rutland Open Studios is in its 13th year
- New ventures to sell and exhibit art including *We Are CIC* in Leicester City
- Venues for learning and membership use such as *Clay Room* at Makers Yard, Leicester
- *Art House* in Leicester continues to flourish
- Fairs and events run by Attenborough Arts, Leicester Print Workshop and SOCK give local and regional artists selling opportunities
- *Marvellous Art* art dealership opened in Leicester 2019
- WebinArt (a Creative Leicestershire programme) provides flexible professional development and mentoring to start up creative businesses
- Etsy Leicester Team run events to sell and promote their work
- Open exhibitions at council-run galleries SOCK in Loughborough and New Walk Museum, Leicester, as well as many independent and artist-led open exhibitions
- Leicester Society of Artists selected membership includes the opportunity to exhibit in New Walk Museum
- Made in Leicestershire created TACIT exhibition 2018
- LCB Depot in Leicester developed Design Season and encourage fine art and craft involvement alongside design and architecture
- Our Universities are teaching skills to hundreds of students
- Independent shops such as Harriman in Leicester, Bagel & Griff and Ada in Market Harborough sell locally-made work

- BBC Radio Leicester programme *The A-Word* covering arts, art events, organisations and exhibitions
- Artist-led networks are growing such as West End Creatives
- Local magazines and online promotions including *Muddy Stilettos*, *The Whistle* and *Cool as Leicester* feature arts alongside other content
- Art trails and arts activity as part of other trails in towns and villages across the county such as Lutterworth Arts Festival & Harborough Artists Cluster
- Art at the Chapel, a new exhibition venue in Leicester
- New studio developments such as Deacon Street Arts
- OpenUppArt pop up exhibitions in Uppingham
- #supportleicesterlocal on Instagram to promote local businesses



WHAT IS MOST IMPORTANT TO OUR ARTISTS?

- Local and online networks
- Sustainable growth not purely financial growth
- Support with teaching practice
- Direct / gallery selling
- Local cohesion and creative community
- Spaces for exhibiting and selling
- Marketing and understanding their markets and how to access them
- Sector cohesion, particularly centred around a venue or organisation

WHAT WOULD HELP AND DOESN'T EXIST

- Public-facing promotion
- Group for craft makers in Leicestershire or East Midlands
- County-wide open studio or trails
- Distinctive local artisan product or manufacturing heritage (in comparison to Sheffield metalwork or Nottingham lace)

STUDIOS

Issues regarding studio spaces within the county come up regularly at discussion and networking events including shortage of affordable and practical spaces as well as dissatisfaction with some existing facilities.

The proportion of people working at home is significant; 59% either have a dedicated room or work in mixed-use spaces such as kitchen table and a further 18% work outside the home some of the time.

The cost of studio space is a major challenge with 48% saying they can't afford the studio they need or the studio costs are a challenge to meet. Security and affordability of studios is an issue nationally. For those paying for studios outside of home most are paying under £200 a month. 32% of respondents say that they can't afford the studio they would really like. 16% say finding the money to pay studio rent is a challenge and 28% feel that their studio has drawbacks. Other issues raised about studios are size and cost, heating and the lack of suitable space to run workshops (which is a key income development goal).

Only 16% of studio holders have access to exhibition space within their studio and 21% have meeting space or teaching space and 14% have communal space. These all impact on networking, promotion and isolation as reflected in the studio desires; 56% would like to have exhibition space and 56% rate teaching / meeting space as important while 48% would like communal spaces.

Studios have a huge impact on artist practice, particularly where studios work well to generate collaboration and joint working. StudionAme in Leicester was established in 2016 and has rapidly become a centre for creativity in the city. As well as artist studios, the building contains communal space, exhibition space and space for running workshops and events. Artists exhibit as a group at major London Art Fairs and collaborate to create opportunities. Their sister company StudionAme Ltd Leicester CIC is a not-for-profit, creative community hub linking Leicester's cultural quarter with the St Matthews community.

PROFESSIONAL DEVELOPMENT

One of the issues highlighted in the 2017 survey is access to professional development. Creative Leicestershire has begun addressing this with activity taking place in summer 2019.

40% of the survey had not attended any training in the last couple of years. Of these, 36% said they couldn't afford training, 32% had problems attending due to childcare or work commitments and a shocking 40% were not aware of opportunities. The survey also showed that 61% have never had any funding for their own work and only 20% have had Arts Council funding while 21% have had other financial prizes or awards.

NETWORKS

Networking need was a key research area for this consultancy project and it has been established that there is a strong desire for networking opportunities across the county and in specific sectors although there isn't a consensus about what kind of networking and where it should take place. Networking attendees vary hugely from small-scale hobbyists to internationally exhibiting artists so it is hard to find a model which suits all. Further research has established that peer group networks may be the most productive way forward for many people rather than a very broad event where they have little in common with other attendees. Facilitation and supported networking is very much wanted and over 90% of responders are willing to pay a small fee (£5 was suggested) to support the costs of a facilitator. Online networks are also a popular option for many artists who would like to be part of a support network with local knowledge for quick queries about local events and organisations.

WEBINART

WebinArt is Creative Leicestershire's flagship one-year Professional Development Programme for early-career creatives and artists in Leicestershire. Working with experienced professionals online and in-person helps creative start-ups navigate their way to confidence and success.

This year's programme includes

- 60 creative entrepreneurs and emerging artists
- Three bespoke 1-2-1 mentoring sessions for each member
- 12 leading creative industry experts
- 12 engaging and practical live webinars
- 6 internationally renowned artists
- 6 exclusive live interviews
- Peer support and networking through a community of like-minded creatives

www.creativeleics.co.uk/webinart

[instagram.com/webinart_uk](https://www.instagram.com/webinart_uk)

PEER MENTORING

In summer 2019, Creative Leicestershire applied for additional funding to support professional development activities for its Made in Leicestershire networks. The offer has focussed around establishing peer mentoring groups for visual artists and makers from across the county. The programme started with peer mentoring training delivered by Ruth Singer, with follow up sessions for two groups consisting of emerging makers and more established makers with facilitation provided by Ruth. The second part of the programme is a professional development and networking day bringing together artists with organisations, and with presentations from working professionals about key aspects of making a living.



Artist portraits were taken by Rosie Reed Gold as part of the Peer Mentoring Development session to help them with promoting themselves and their work. Participants also took part in a session offering advice on how to photograph their work and have also been able to apply for a small professional development bursary towards training, learning or mentoring.

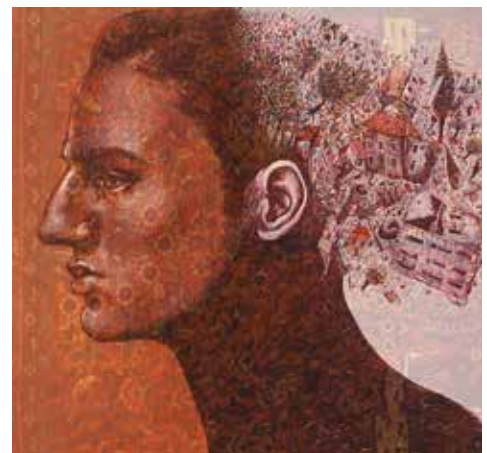
PROFESSIONAL DEVELOPMENT CASE STUDIES

GEORGE SFOUGARAS

George's work is concerned with the ways personal identities are shaped by history, culture, myths, and national symbols. He works in a range of media, including painting, printing and film. George's 2019 Arts Council England funded project Recovered Histories comments on shared human history, addressing change and reconciliation. Layers of meaning are created through the symbolic use of pattern and light, combined with artwork and archival materials from displaced families. This project was presented as part of the Journeys International Festival across Leicester.

George is WebinArt 2019 lead artist.

www.georgesfougaras.com



LOZ ATKINSON

Loz Atkinson is an award winning, widely collected artist, practicing and exhibiting for over 10 years. Her paintings are inspired by nature then interrupted by geometry, and are concerned with the human need to conquer the existential mysteries of the universe.

Her 2019 Arts Council England funded project Expedition JP237 is a multi-faceted project exploring ideas of pilgrimage, remembrance and sacrifice. Loz is to climb Monte Zatta in Italy to discover her Great Grandfather's fatal WW2 plane crash site. Climbing the mountain on the 75th anniversary of the crash and through personal exploration, physical expedition, collaboration, research, documentation, fieldwork and the creation of brand new work including a sculpture made from a WW2 Halifax bomber engine, the same plane her Grandfather died in, to produce a major new exhibition.

Loz is a WebinArt 2019 mentor.

www.lozatkinton.co.uk



COLLABORATIVE PROJECTS CASE STUDY

Collaboration and collective working is important to creative and business development for many artists.

PETER CLAYTON, SARAH KIRBY AND MICHELLE HOLMES

Sarah, Peter and Michelle had shown together at Sarah's annual Open Studio event in Leicester for several years before embarking upon a series of collaborative projects. Sarah and Peter are based in Leicester city and Michelle in the county at Staunton Harold.

The aim of their collaborative work was to visit places or areas of mutual interest. It gave them the opportunity to share their experiences and discuss their varied or shared responses whilst translating them in their own personal ways. Each project takes place over the period of a year or more so they record passing time and changing seasons.

Although working in quite different media they feel their culminating work always seems to be visually complimentary perhaps through their common interest in the fundamentals of visual communication - form, colour, material and process - and the celebration of a sense of place. The projects offer mutual support and encouragement complimenting and enhancing their individual working practices.

PETER CLAYTON

Peter is a visual artist working in a variety of media using different approaches to explore a range of themes. He exhibits widely throughout the UK and has undertaken numerous commissions, collaborative projects and residences within the private and public sectors.

www.peterclayton.org



SARAH KIRBY

Sarah is inspired by the city, garden and allotments around Leicester. She has been Artist in Residence at University of Leicester Centre for Urban History and at Launde Abbey with Peter & Michelle. Recent commissions include Abington Park Museum, tea labels for Fortnum and Mason, and cover images for Candlestick Press.

www.sarahkirby.co.uk



MICHELLE HOLMES / ARCHANGEL STUDIO

Michelle's creative practice is rooted in her love for drawing with stitch by hand and machine. She re-purposes fabrics and explores the reflective and tactile qualities of cloth and stitch. Her work is inspired by boro textiles and Seventeenth century english embroidery. Michelle's studio at Ferrers Centre, Staunton Harold, is open to the public.

www.archangelstudio.co.uk



COLLABORATION & COMMUNITY CASE STUDY

Textile artists Ruth Singer & Bethany Walker have collaborated since 2014 alongside their own distinct practices. They formed the brand Interlace to create concrete and cloth interior products and sculpture. They were commissioned to create a community arts project with young people in Leicester which was funded by the local charity the Joyce Carr Doughty Trust in 2016. The finished work 'Urban Growth' is on display at Makers Yard, Leicester.



TACIT EXHIBITION

This exhibition was co-ordinated by Ruth Singer for Made in Leicestershire after a request from LCB Depot to create a contemporary craft event for their first Design Season in 2018. This was a rare opportunity to showcase the best Leicestershire makers in the city, many of whom rarely show work in the city or county. The exhibition also showed the diversity of practice within the county and the wide range of non-standard craft practice which is created here. The show was a mix of established artists and makers and new graduates / start up businesses, all working in innovative materials or methods.

Exhibitors felt that the exhibition achieved its aims of "Showing that modern, contemporary craft is thriving in Leicestershire and that exceptional, unexpected and innovative work is being produced". LCB Depot produced a catalogue of the exhibition which continues to be used as a showcase for the quality of work created here.

TACIT EXHIBITION EXHIBITORS

Ashleigh Richardson	Kiran Ravilious
Emma-Jane Rule	Lucy Andrews
Graeme Hawes	Lucy Naylor
Gillian McFarland	Maya Kiran Mistry
Gizella Warburton	Michelle McKinney
Hannah White	Muuna
Interlace	Ruth Singer
Jane Sunbeam	Sharyn Dunn
Jo Keogh	Susan Knox
Kate Bajic	



LCB Depot Networking during Tacit exhibition was attended by 25 people, including a number of exhibitors. A public preview followed the networking and this enabled artists to meet interested visitors and potential buyers.

ARTISTS

GIZELLA K WARBURTON

Gizella's work has a raw and simple materiality, with layers of detail that are revealed or hidden as light and shadow pass across and through the surfaces, echoing the transience of emotional and physical landscape. Abstract compositions evolve through the tactile and contemplative process of drawing with paper, cloth and thread. Wall works and sculptural pieces include works on slate and weathered wood grounds, and vessel forms.

www.gizellakwarburton.co.uk



KATIE ALMOND

Katie is based in Rutland and creates decorated porcelain keepsakes. Each piece is canvas for hand painting and collage combining drawings with found, vintage ephemera. Katie is inspired by nostalgia, paper ephemera, vintage textiles and a love of drawing.

katiealmond.co.uk



ARTISTS

MICHELLE MCKINNEY

Working from her garden studio Michelle creates original artworks in translucent woven metal stainless steel, copper and brass. Michelle's work is inspired by the fragility and yet also resilience of the natural world around her.

www.michellemckinney.co.uk



JANE FRENCH

Jane mainly paint portraits in oil and often includes detail, pattern or narrative. She has completed hundreds of portrait commissions and was recently shortlisted for the BP Portrait Award. Jane also runs oil painting workshops at a variety of different venues.

www.janefrench.co.uk



ARTISTS

JODIE HATCHER

Jodie designs and creates woven sculptural vessels using thin copper strips. Each piece is woven by hand and then repeatedly hammered until she achieves the desired form.

www.jodiehatcher.co.uk



KIRSTY FREEMAN

Kirsty is an embroiderer; designing and making home decor accessories. The inspiration for her work comes from animals and botanicals.

www.kirstyfreemandedesign.co.uk



ARTISTS

CLAIRE MORRIS-WRIGHT

Claire Morris-Wright explores land and landscape in her work, inspired by the countryside she lives in. She works in paint and print, often using natural materials including soil. Claire's Hedge Project, exploring one hedge through the seasons, toured Midland galleries in 2018. She is currently working on research into the cracks and gaps in a concrete 1940's path that was built in the forest behind her house.

www.clairemorris-wright.com



DEE BARNES

Dee creates mixed media jewellery made from her own original paintings. She uses acrylic paints, chinks, inks and gold leaf, silver and resin to create jewel-like wearable statement jewellery.

www.deebarnesdesigns.com



ARTISTS

BIRD AND BUD

Kirsty is inspired by nature and an obsessional love of birds, fuelled by flicking through vintage nature guides and illustrated books, and drawn to colour and pattern. She uses pen, ink and paint.

www.instagram.com/birdandbuddesigns



ALISON CARPENTER-HUGHES

Alison is a mixed-media artist, writer and workshop facilitator focusing on free motion embroidery, using the sewing machine as a tool for drawing or painting. Her work explores the passing of time, and she uses found materials and symbolism to express narratives.

www.ajcgallery.com



ARTISTS

SONYA VINEY

Sonya is an artist working in the expanded field of ceramics. Her practice focuses on concept and contextualising clay multiples. Her recent work is site specific installation in response to collections or place.

www.sonyaviney.com



EMMA-JANE RULE

Using fold forming and other silversmithing practices, Emma-Jane's creations are tactile and sculptural, reflecting the lines and rhythms found in the natural world, where she finds her inspiration. Surface textures and patinas enhance each design.

www.emma-janerulesilversmith.co.uk

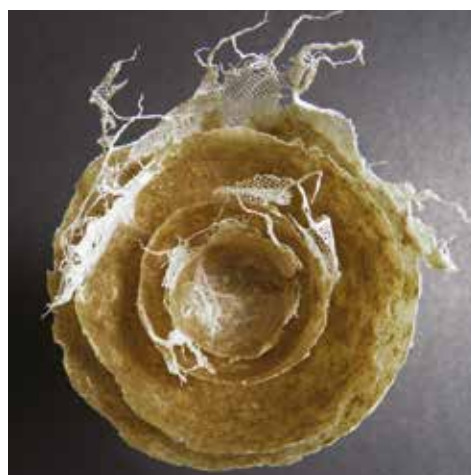


ARTISTS

JOY NORMAN

Joy is fascinated by the tactile qualities in the surface and texture of handmade paper. She is drawn to its imperfections and fragility and has sought for many years to emphasise these qualities in her work.

www.joynorman.co.uk



FIONA HUMPHREY

Fiona is an artist-printmaker creating original linocuts and linocut collages, setting bold graphic carving against loose gestural mark-making in my abstract and semi-abstract minimalist compositions.

www.fionahumphrey.com



ARTISTS

EMMA FITZPATRICK

Emma's work draws influence from city architecture, landscape and people. She uses a variety of media including etching, lithography, ink, watercolour, charcoal and pastel.

www.emmafitzpatrick.eu



TANTI

Tanti is a modern design studio, working on a wide range of products and processes with accountability at our core. They strive hard to deliver intelligent design that is ecologically respectful and appropriate to our time and place.

www.tantidesign.co.uk



ARTISTS

JENNIE MCCALL

Jennie is influenced by myth and nature and creates dramatic and compelling sculptures, hand built in clay and enhanced with oxides and glazes.

www.jenniemccall.com



JANE SUNBEAM

Jane is an illustrator and printmaker who inhabits a world that lies somewhere between reality and daydreaming. Her work is concerned with illustrating snippets of daily lives, whether they be real or imagined, and is set in the world she inhabits or more magical lands. Jane graduated from Cambridge School of Art with a Masters in Children's Illustration in 2016.

www.janesunbeam.com



ARTISTS

LUCY STEVENS

Lucy Stevens' artistic practice examines the acoustic ecology of the natural environment, using drawing, painting, field recording, printmaking and performance as a tool to visualise sound produced by wildlife. Lucy is a member of WebinArt 2019 and a peer mentoring group member.

www.lucystevens.co.uk



DEBBIE BARBER

Debbie creates highly decorative ceramics, bird forms, bowls and bottles. She specialises in naked Raku and sawdust firing enjoying the hands on and dynamic process of Raku firing.

www.debbiebarber.co.uk



ARTISTS

SHARYN DUNN

Sharyn's work focusses on designs that are thought provoking, interactive and explore the interaction of light through layered geometric forms.

The natural geometric forms are created when the materials are folded and further enhanced by piercing patterns.

The works are produced from a range of simulated parchment or fine polymers, each chosen for their visual quality, strength and ecological features.

www.sharyndunn.com



SAMANTHA ROBINSON

Samantha Robinson works with a subtle combination of porcelain, metals and textiles to produce an exciting and creative take on commonplace objects.

Using the porcelain's purity as a base and inspiration from textures, labels, tags and the everyday ordinary, Samantha adds a delicate stitch, a hint of colour or a glint of metal, drawing our attention to what is often overlooked.

www.samantha-robinson.co.uk



ARTISTS

MARIA BOYD

Maria graduated from the Scottish College of Textiles (Heriot Watt University) and her background has been in textile design.

Her work now explores nature and wildlife in watercolour and acrylic inks. Her paintings contain strong design elements and upon closer inspection reveal a riot of pattern.

www.instagram.com/mariaboydart/



GRAEME HAWES

Graeme's blown glass work encompasses small batch production for galleries and retail outlets through to large scale lighting and bespoke commissions for individuals, hotels around the world and well respected lighting and chandelier companies. His work includes the use of many traditional handmade techniques combined with a very contemporary edge.

www.thecitystudio.co.uk



ARTISTS

KATE BAJIC

Kate Bajic creates handmade, bespoke jewellery inspired by natural forms and structures, translated into contemporary wearable pieces of art.

Kate is a Webinarart Lead Artist 2019 and a peer mentoring group member.

www.katebajic.co.uk



RUTH SINGER

Ruth is an award-winning textile artist with a background working in museums. Heritage and history infuse her work which often explores personal and emotional subjects through delicate, subtle work.

Ruth works mainly on exhibitions, residencies, commissions and community engagement projects.

www.ruthsinger.com



ARTISTS

MANDEEP DHADIALLA / THE LAUGHING CACTUS

Artist printmaker producing linocut and woodcut prints with a body of work exploring urban flora inspired by her childhood home of equatorial Kenya and the great British landscape.

www.thelaughingcactus.com.



KIRAN RAVILIOUS

Kiran uses traditional lino printmaking techniques to produce hand printed designs. Each design is hand-carved and printed by her in her studio in Leicester.

www.kiranravilious.com



ARTISTS

KELLY MCROBIE

Kelly is a textile designer maker who uses traditional sewing techniques to produce contemporary gifts and fashion accessories. Kelly's inspiration stems from her love of antiques and collectables. She mainly uses locally-sourced leather skins and British wools to create one off pieces which adorn the body.

www.kellymcrobie.com



DANIELLE VAUGHAN

Danielle creates images from ripped paper recycled from magazines and other found objects. Text finds itself within her images - mostly it is random, but occasionally deliberate.

www.dvaughangallery.com



ARTISTS

JACQUELINE MAY DESIGNS

Jacqueline creates designs that combine the simple beauty of line and a delightful interaction of colour and capture the essence and joy of nature. She celebrates vibrant gardens to wild riversides to a gentle stroll among the trees.

www.jacquelinemaydesigns.com



BEING KNITTERLY

Nicki is a knit and crochet designer and tutor. She has had designs published by knitting magazines as well as publishing her own patterns. She teaches knitters and crocheters of all abilities.

www.nickimerrall.co.uk



ARTISTS

DOVILE GLASS

Dovile Grigaliunaite's glass blowing work follows the organic shapes and natural behaviours of molten glass. She explores the way gravity influences the form through movement and connects traditional techniques with contemporary style.

<http://bit.ly/DovileG>



EMILY BIRD

Emily Bird is a mixed media artist who creates fun and contemporary designs to bring a bit of 'happy' to your home. She combines an illustrative style using hand cut paper techniques, paint and print.

[instagram.com/quirkebird](https://www.instagram.com/quirkebird)



CREATIVE LEICESTERSHIRE

Leicestershire County Council supports opportunities to collaborate, test new services and resolve challenges to growth across the creative sector through its Creative Leicestershire service and the WebinArt programme. These programmes provide access to a range of advice and support helping creative enterprises survive and grow and are a vital catalyst connecting people through networking opportunities, strengthening supply chains and retaining knowledge.

Over the 14 years since it began Creative Leicestershire has made a significant contribution to developing the creative sector in the sub-region and is the go-to resource for small creative businesses. Creative Leicestershire has worked on many initiatives for the creative economy including running programmes in partnership with the three universities: De Montfort, Leicester and Loughborough and has successfully delivered numerous projects with support from Arts Council England, the Leicester and Leicestershire Local Enterprise Partnership and European Regional Development Fund.

Website: www.creativeleics.co.uk

Telephone: 0116 305 4117



CREATIVE LEICESTERSHIRE



Supported using public funding by
**ARTS COUNCIL
ENGLAND**

collaborate
GROWING BUSINESS TOGETHER



Working in partnership with:

